



PLASTER TRIMS & TAPE

EXCITING NEW PTT PRODUCT



52-PISH10 – Internal Shadow Bead (Worldwide Registered Design Pending)

20 per Carton / 30 Cartons per pallet

Use on Ceilings to Create a shadow effect

- Introducing not just a new product but a game changer for anyone that has ever used a 10mm Shadow Bead on a ceiling.

This new product will not only make your life easier but it will save you money on labour.

The old way to do a 10mm Shadow Bead on a ceiling was

- Put the wall sheets up first
- They had to go all the way to the top of the stud (you often had to get a wider sheet to do that)
- They had to be square edge
- Then come back and put the ceiling sheets up
- You had to try to line up the edge of the 10mm Shadow Bead vertically and horizontally
- After it was set you had to clean the mud out of the recess
- You also had to seal or no gap between the ceiling & wall

The new way to do a 10mm Shadow Bead is by using the new PTT Internal Shadow Bead (52-PISH10), which is like an internal angle with a built-in shadow bead, we believe this is a world first and have a Worldwide Registered Design pending.

- You can put up the walls and ceilings at the same time
- You can you a recess edge on the wall sheets
- You don't have to take them all the way up because the 52-PISH10 will cover a gap
- You just leave a 12mm gap on the ceiling and put the new PTT Internal Shadow Bead up like you would an internal angle.
- You set the angle and when finished pull out the tearaway cover strip leaving a clean 10mm shadow

The new PTT Internal Shadow Bead was recently introduced at the National AWCI NZ Conference on Hamilton Island in October 2017

The response from Major commercial and domestic contractors and suppliers was amazing, they were from every state in Australia as well as New Zealand, USA, France and Asia below are some of the comments from them

- *What a simple idea it's like when someone invented the paper clip.*
- *This is going to make doing shadow beads so easy.*
- *I want it where can I buy it?*
- *How easy is that, brilliant.*
- *I'm calling my supervisor right now telling him to change to this product.*

The first contractor who used it on a site where he had 4kl of Shadow bead to install said in labour alone he saved approximately 4 hours per 80m² apartment, almost no wastage because it joins so easy and as well he saved on material by only having to use a 1350 and 1200 sheet instead of 2 x 1350's.

PTT

PLASTER TRIMS & TAPE

Below are some onsite photos of the first time in the world the PTT Internal Shadow Bead was used.



This site called for a Green Star rating so he used the PTT Cornerbead Spray Adhesive and PTT Trims & Angles.



Cut internal and external mitres with a drop saw or grinder.



Lightly spray the ceiling & wall junction with the PTT Cornerbead Spray Adhesive



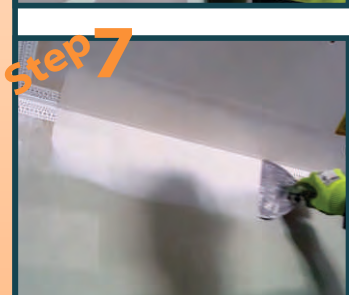
Put the PTT Ceiling Shadow Bead in place



Joining the new Internal Bead is so easy, you have virtually no waste.



Mitre corners just like Internal angles or cornice



Setting is easier than setting an internal angle because of the special setting guides



Special tearaway coming out leaving the shadow gap perfectly clean.



So easy to use and keep straight because of it's unique design



Set with the tearaway out.



Proudly manufactured in Australia by



www.ptrim.com.au

Distributed Nationally by



www.globaltradesupplies.com.au

P 02 9774 4545

